

BOECO WATER BATH PWB-4 AND PWB-8

The personal advanced PID microprocessor controlled waterbath PWB-4 and PWB-8 with their specification, easy operation and small foot print are designed for chemical, pharmaceutical, medical and biological routine laboratory use and as well as for research purpose.

▶ **Control Panel:**
Easy setting and operating, adjustable temperature, alarm signal display Single Line 4 digitals LED

▶ **Overheat Protection:**
The power will automatically be turned of when the internal temperature is over 110 °C

Specification	PWB-4	PWB-8
Capacity:	4 L	8 L
Temperature Range:	Room Temperature +5°C.. +99,9°C	
Temperature Setting:	0,1 °C	
Uniformity:	± 0,2 (37°C)	
Fluctuation of Temp.:	± 0,5°C (RT + 5-80°C), ± 0,8 (80 - 99,9°C)	
Heating Time:	≤ 100 min (from 30°C to 90°C at RT 25°C)	
Input Power:	400 W	600 W
Water outlet:	No	Yes
Bath Inner Dimensions: (LxWxH mm)	238x135x146	325x265x150
Outside Dimensions: (LxWxH mm)	380x212x250	445x285x316
Weight:	4 kgs	8 kgs

Code	Description
BOE 8036000	Waterbath PWB-4, without lid, 220V, 50/60 Hz
BOE 8036100	Waterbath PWB-4, without lid, 115V, 60 Hz

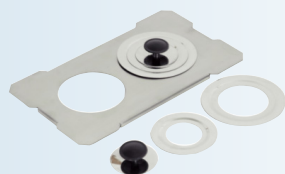
Accessories for PWB-4

Code	Description
BOE 8036001	Gabled plastic lid
BOE 8036002	Flat stainless steel lid with 2 concentric rings
BOE 8036018	Test tube rack st. steel with 41 x 18 mm ø holes
BOE 8036015	Test tube rack st. steel with 41 x 15 mm ø holes
BOE 8036003	Flask tray, stainless steel

Code	Description
BOE 8037000	Waterbath PWB-8, without lid, 220V, 50/60 Hz
BOE 8037100	Waterbath PWB-8, without lid, 115V, 60 Hz

Accessories for PWB-8

Code	Description
BOE 8037001	Gabled stainless steel lid
BOE 8037002	Flat stainless steel lid with 4 concentric rings
BOE 8037018	Test tube rack st. steel with 76 x 18 mm ø holes
BOE 8037015	Test tube rack st. steel with 76 x 15 mm ø holes
BOE 8037003	Flask tray, stainless steel



FLAT LID FOR PWB-4



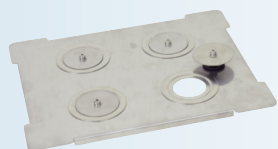
GABLED PLASTIC LID FOR PWB-4



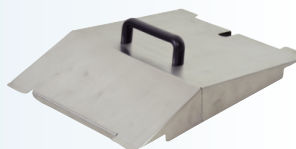
TEST TUBE RACK FOR PWB-4



FLASK TRAY FOR PWB-4



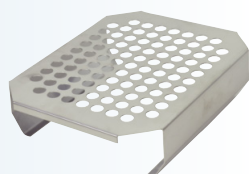
FLAT LID FOR PWB-8



GABLED LID FOR PWB-8



TEST TUBE RACK FOR PWB-8



FLASK TRAY FOR PWB-8