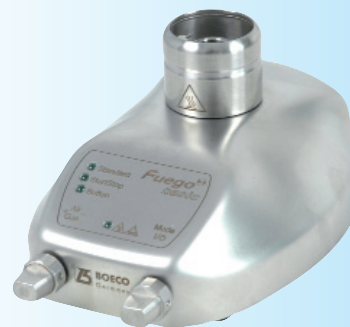


# BOECO FUEGO SCS BASIC SAFETY LABORATORY GAS BURNER

is a new standard among laboratory gas burners. With its innovative design this laboratory gas burner is suitable for all flame related applications in the laboratory.

## Specification:

<b>Technology:</b>	Microprocessor
<b>Programs</b>	
Foot pedal:	Standard (flame during pressed foot pedal) Start-Stop with timer, 60 min
Button:	Start-Stop with timer, 60 min
<b>Safety features</b>	
Safety Control System (SCS) with gas safety cut off:	ignition and flame control temperature monitor burner head clogging and assembly monitor (BHC) automatic unit switch off, 4 h residual heat display
<b>Gas supply and consumption</b>	
Gas connection:	1/4" left with gas filter
Gas types:	I12ELL3B/P: natural gas E/LL, 18-25 mbar liquid gas, 20 - 50 mbar
Connected load:	70 g/h liquid gas
Continuous cartridge operation:	CV 360 - 40 min, Express 444 -50 min CG 1750 - 150 min, C 206 - 170 min CP 250 - 210 min, CV 470 - 370 min
<b>Temperatures</b>	
Flame temperature:	1350 °C on liquid gas 1300 °C on natural gas (E)
<b>Electrical</b>	
Power consumption:	2VA
Power connection:	100 - 240 V / 50/60 Hz / max 0,3 A 9 V DC / 1A
<b>Mechanical</b>	
Casing and operation controls:	stainless steel / glass, UV and solvent resistant
Cover of burner shaft:	Ø 23 mm, with drains
Size (w x h x d):	103 x 49 x 130 mm
Weight:	700 g
<b>Licenses</b>	
DIN-DVGW Reg.-No:	NG-2211AS0167
CE:	EN 61326-1, EN61000-3-2, EN 61010
EEC guidelines:	89/336/EEC, 73/23/EEC



Code	Description
BOE 8201000	BOECO Fuego SCS basic, Safety Laboratory gas burner with button function and foot pedal, 3 standard-programs for button (function knob) and foot pedal SCS (Safety Control System) with BHC (Burner Head Control), Removable and decomposable burner head Tild mechanism, right / left, Holding device for 3 inoculation loop holders. Nozzles for natural gas, propane / butane gas, Turbo flame Wrench 17 mm for gas connection, Screwdriver for burner head and cover of burner shaft. Tubing connector with swivel nut, Switching power supply

## Accessories

Code	Description
USB 5431	Inoculation Loop / needle holder, 230 mm,
USB 5460	Inoculation Loop, st.steel wire Ø0,6mm, Øloop 1,5mm
USB 5461	Inoculation Loop, st.steel wire Ø0,6mm, Øloop 2,5mm
USB 5462	Inoculation Loop, st.steel wire Ø0,6mm, Øloop 4,0mm

