

# REUSABLE PLASTICWARE



## GRADUATED CYLINDERS PP

tall, class B per DIN 12681/ISO 6706, translucent, ring-moulded graduations, hexagonal base

Volume	Art. No.	Tolerance	Height	Packing
10 ml	VIT 646-941	± 0,2 ml	145 mm	12
25 ml	VIT 647-941	± 0,5 ml	170 mm	12
50 ml	VIT 648-941	± 1,00 ml	200 mm	12
100 ml	VIT 649-941	± 1,00 ml	250 mm	12
250 ml	VIT 650-941	± 2,00 ml	315 mm	6
500 ml	VIT 651-941	± 5,00 ml	360 mm	6
1000 ml	VIT 652-941	± 10,00 ml	440 mm	6
2000 ml	VIT 653-941	± 20,00 ml	482 mm	3



## GRADUATED CYLINDERS PP

tall, class B per DIN 12681/ISO 6706, translucent, ring-moulded graduations, overprinted in blue, hexagonal base

Volume	Art. No.	Tolerance	Height	Packing
10 ml	VIT 646-081	± 0,2 ml	145 mm	12
25 ml	VIT 647-081	± 0,5 ml	170 mm	12
50 ml	VIT 648-081	± 1,00 ml	200 mm	12
100 ml	VIT 649-081	± 1,00 ml	250 mm	12
250 ml	VIT 650-081	± 2,00 ml	315 mm	6
500 ml	VIT 651-081	± 5,00 ml	360 mm	6
1000 ml	VIT 652-081	± 10,00 ml	440 mm	6
2000 ml	VIT 653-081	± 20,00 ml	482 mm	3



## VOLUMETRIC FLASKS (PP)

with screw-caps (PP), translucent, individually ring-marked, The tolerances are approx. 20% better than class B according to DIN EN ISO 1042

Volume	Art. No.	Height	Thread	Packing
10 ml	VIT 677-891	90 mm	GL 18	6
25 ml	VIT 671-891	115 mm	GL 18	6
50 ml	VIT 672-891	150 mm	GL 18	6
100 ml	VIT 673-891	180 mm	GL 18	6
250 ml	VIT 674-891	235 mm	GL 25	5
500 ml	VIT 675-891	270 mm	GL 25	4
1000 ml	VIT 676-891	310 mm	GL 32	3



## VOLUMETRIC FLASKS (PMP)

with screw-caps (PP), opaque, Class A with imprinted lot number and batch certificate. UV-absorbent for storage of light-sensitive substances

Volume	Art. No.	Height	Thread	Packing
10 ml	VIT 670-040	90 mm	GL 18	2
25 ml	VIT 671-040	115 mm	GL 18	2
50 ml	VIT 672-040	150 mm	GL 18	2
100 ml	VIT 673-040	180 mm	GL 18	2
250 ml	VIT 674-040	235 mm	GL 25	2
500 ml	VIT 675-040	270 mm	GL 25	2
1000 ml	VIT 676-040	310 mm	GL 32	1

## VOLUMETRIC FLASKS (PP)

with stoppers (PP), translucent, individually ring-marked, The tolerances are approx. 20% better than class B according to DIN EN ISO 1042

Volume	Art. No.	Height	Stopper	Packing
10 ml	VIT 677-941	90 mm	NS 10/19	6
25 ml	VIT 671-941	115 mm	NS 10/19	6
50 ml	VIT 672-941	150 mm	NS 10/19	6
100 ml	VIT 673-941	180 mm	NS 14/23	6
250 ml	VIT 674-941	235 mm	NS 19/26	5
500 ml	VIT 675-941	270 mm	NS 19/26	4
1000 ml	VIT 676-941	310 mm	NS 24/29	3



## ERLENMEYER FLASKS (PP)

wide neck, blue scale, translucent, supplied complete with PP screw-caps NS-stoppers can also be used (not included)

Volume	Art. No.	Grad	Thread GL NS-Stopper	Packing
25 ml	VIT 671-941	115 mm	NS 10/19	6
50 ml	VIT 672-941	150 mm	NS 10/19	1 / 30
100 ml	VIT 673-941	180 mm	NS 14/23	1 / 50
250 ml	VIT 674-941	235 mm	NS 19/26	1 / 50
500 ml	VIT 675-941	270 mm	NS 19/26	1 / 30
1000 ml	VIT 676-941	310 mm	NS 24/29	3



## BEAKER (PP)

blue scale, translucent, per ISO 7056

Volume	Art. No.	Grad	Height	Packing
10 ml	VIT 605-081	2 ml	35 mm	12
25 ml	VIT 606-081	5 ml	47 mm	12
50 ml	VIT 607-081	10 ml	60 mm	12
100 ml	VIT 608-081	20 ml	70 mm	12
150 ml	VIT 609-081	20 ml	80 mm	12
250 ml	VIT 610-081	50 ml	94 mm	6
400 ml	VIT 611-081	50 ml	109 mm	6
500 ml	VIT 618-081	100 ml	122 mm	6
600 ml	VIT 612-081	100 ml	125 mm	6
800 ml	VIT 613-081	100 ml	136 mm	6
1000 ml	VIT 614-081	100 ml	149 mm	6
2000 ml	VIT 615-081	200 ml	183 mm	6
3000 ml	VIT 616-081	200 ml	214 mm	4
5000 ml	VIT 617-081	500 ml	248 mm	4



## GRADUATED PITCHERS (PP)

moulded graduations, translucent

Volume	Art. No.	Grad	Height	Packing
50 ml	VIT 446-941	2 mm	70 mm	24
100 ml	VIT 447-941	2 mm	80 mm	24
250 ml	VIT 440-941	5 mm	120 mm	12
500 ml	VIT 441-941	10 mm	133 mm	12
1000 ml	VIT 442-941	10 mm	170 mm	6
2000 ml	VIT 443-941	20 mm	215 mm	6
3000 ml	VIT 444-941	50 mm	242 mm	6
5000 ml	VIT 445-941	100 mm	270 mm	6



## GRADUATED PITCHERS (PP)

moulded blue graduations, translucent



Volume	Art. No.	Grad	Height	Packing
50 ml	VIT 446-081	2 mm	70 mm	24
100 ml	VIT 447-081	2 mm	80 mm	24
250 ml	VIT 440-081	5 mm	120 mm	12
500 ml	VIT 441-081	10 mm	133 mm	12
1000 ml	VIT 442-081	10 mm	170 mm	6
2000 ml	VIT 443-081	20 mm	215 mm	6
3000 ml	VIT 444-081	50 mm	242 mm	6
5000 ml	VIT 445-081	100 mm	270 mm	6

## SEDIMENTATION CONE

Imhoff-type (SAN), moulded graduations, screw-cap at tip for easy cleaning



Volume	Art. No.	Grad	Division	Packing
1000 ml	VIT 759-91	0 - 2 ml	0,1 ml	3
		2 - 10 ml	0,5 ml	
		10 - 40 ml	1,0 ml	
		40 - 100 ml	2,0 ml	
		100 - 1000 ml	50 ml	

## FUNNELS (PP)

transparent



Diameter	Art. No.	Height	Stem Diam.	Packing
30 mm	VIT 408-94	47 mm	2 mm	24
30 mm	VIT 410-94	47 mm	5 mm	24
40 mm	VIT 411-94	65 mm	5 mm	24
50 mm	VIT 412-94	85 mm	9 mm	24
75 mm	VIT 413-94	110 mm	10 mm	12
100 mm	VIT 414-94	155 mm	13 mm	12
120 mm	VIT 415-94	180 mm	14 mm	12
150 mm	VIT 416-94	220 mm	17 mm	12

## WASH BOTTLES

Narrow neck bottles in polyethylene soft (LDPE), natural



Volme	Art. No.	Dimensions D-d-H (mm)	Packing
50 ml	KJS E50	37 - 11 - 87	100
100 ml	KJS E100	47 - 11 - 105	635
250 ml	KJS E250	61 - 18 - 140	252
500 ml	KJS E500	75 - 18 - 177	123
1000 ml	KJS E1000	97 - 20 - 215	75
2000 ml	KJS E2000	120 - 20 - 264	36

Screw caps for wash bottles, with spraying tube (swan neck)

Diam.	Art. No.	fit to narrow neck bottles:	Packing
18 mm	KJS SR18	E50, E100	25
25 mm	KJS SR25	E250, E500	25
28 mm	KJS SR28	E1000, E2000	25

## ASPIRATOR BOTTLES

HDPE, natural color, with blue litre scale and screwed-on closure with stopcock, HDPE, blue (480-76459)



Volume	Art. No.	Packing
5 L	KAU 350-84137	11
10 L	KAU 350-84132	6
25 L	KAU 350-84138	5
60 L	KAU 350-84139	2

## PIPETTE RACK, PP,

Rotary model, for 94 pipettes of different sizes  
autoclavable at temperatures up to 121°C.

### Art. No.

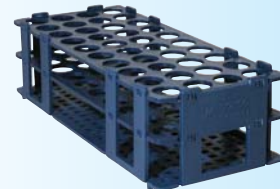
BOE 194



## TEST TUBE RACKS

for general purpose, round holes, easy to assemble  
blue, autoclavable at temperatures up to 121°C.  
Dimension: 246 x 104 x 64 mm

Tube Ø	Code	Capacity
13	BOE 190131	90
16	BOE 160161	60
20	BOE 140201	40
25	BOE 124251	24
30	BOE 121301	21



## MAGNETIC PTFE ENCAPSULATED STIRRING BARS

cylindrical, smooth round profile, universal application

ØxLmm	Code
4,5 x 12	BOE 114512
6 x 10	BOE 110610
6 x 13	BOE 110613
6 x 20	BOE 110620
6 x 25	BOE 110625
7 x 20	BOE 110720
7 x 30	BOE 110730
7 x 40	BOE 110740
8 x 50	BOE 110850
10 x 60	BOE 111060
10 x 70	BOE 111070
10 x 80	BOE 111080



## MAGNETIC PTFE ENCAPSULATED STIRRING BARS

with pivot ring

ØxLmm	Code
6 x 25	BOE 130625
8 x 13	BOE 130813
8 x 40	BOE 130840
8 x 50	BOE 130850
10 x 25	BOE 131025
10 x 50	BOE 131050
10 x 60	BOE 131060



## MAGNETIC STIRRING BAR RETRIEVER, PTFE

Length mm	Code
350	BOE 114350

